



Key for the Swedish damselflies

This PDF-document is created to offer good printing quality of the corresponding HTML-document. The latest version of as well PDF- as HTML-document are available at my web site "Swedish dragonflies"
<http://home9.swipnet.se/~w-90582/dragonfly/dragonfly.html>

This is a translation of Tobias Ivarsson's amazing "Trollsländor i Ulricehamnsbygden". It's a great honor for me to have the possibility to show this key here at "Swedish dragonflies". I have now, together with Tobias expanded this key to cover all Swedish damselflies. As it's very difficult to translate identification keys i welcome all corrections and ideas of improvements, send an e-mail to: martin.peterson@mbox301.swipnet.se

- | | |
|---|----|
| 1. Male (with accessory copulatory organs fig. 1) | 2 |
| Female (with egg-laying apparatus fig. 2) | 21 |

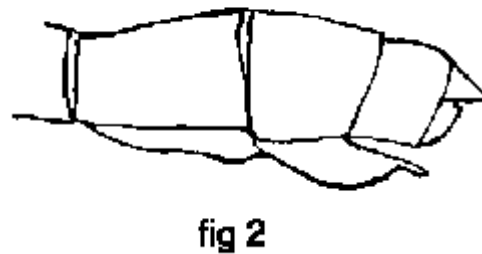
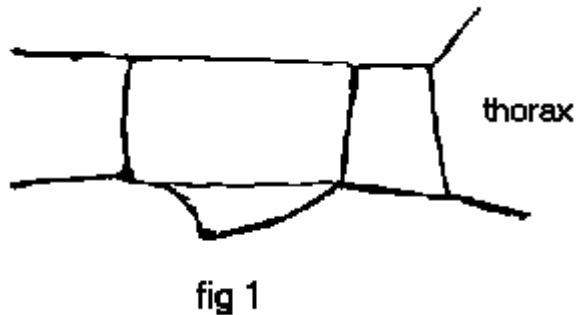


fig.1. The accessory copulatory organs of the male
 fig. 2. The egg-laying apparatus of the female

- | | |
|---|-----------------------------|
| 2. Damselfly looks metallic green | 3 |
| Colors of damselfly are matt (red, blue, white, green, black, brown) or dark bronze | 9 |
| 3. Damselfly looks metallic blue, wings at least partly colored blue,
no wing mark | <i>Calopteryx</i> 4 |
| Damselfly is green or blue, with metallic bronze parts. Distinct wing mark | 5 |
| 4. Wings almost totally blue | <i>Calopteryx virgo</i> |
| Wings transparent with a blue stripe crossing | <i>Calopteryx splendens</i> |
| 5. Damselfly very tiny, wing mark almost as wide as long | <i>Nehalennia speciosa</i> |
| Damselfly big, wing mark at least double as long as wide | <i>Lestes</i> 6 |

6. Upper anal appendages big, the back side of the head is dark 7
 Upper anal appendages very tiny (fig. 5), the back side of the head with a yellow edge 8

7. Upper anal appendages points straight backwards (fig. 3) *Lestes sponsa*
 Upper anal appendages are curved towards each other (fig. 4) *Lestes dryas*

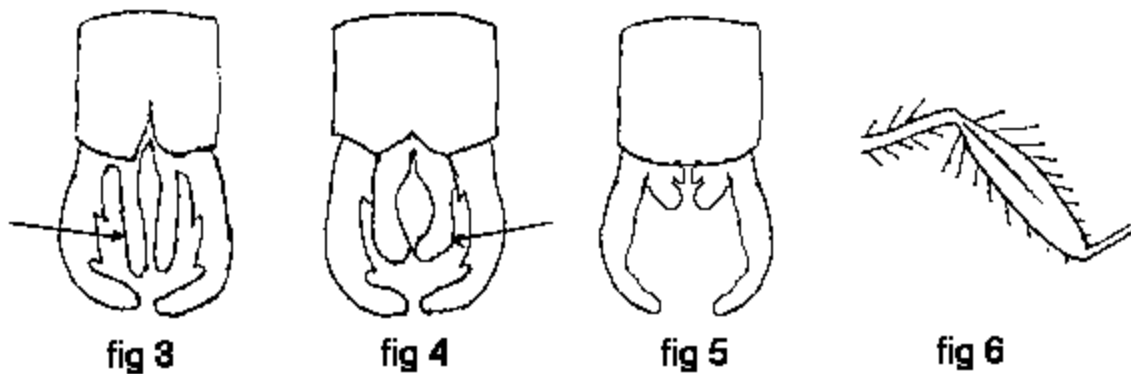


fig.3. *Lestes sponsa*, male, anal appendages
 fig.4. *Lestes dryas* male, anal appendages
 fig.5. *Lestes virens*, male, anal appendages
 fig.6. *Platycnemis pennipes*, tibia

8. Wing mark one-colored, legs black with a yellow stripe *Lestes virens*
 Wing mark two-colored dark/yellow, legs yellowish brown *Lestes barbarus*

9. Tibias are broad and flat (fig. 6), double shoulder line, color of damselfly is white-pale blue *Platycnemis pennipes*

Tibias are not broad and flat, color of Damselfly is blue, green, black, red or brownish white 10

10. Wing mark nearer apex of fore-wing than hind wing *Sympetma fusca*
 Wing marks at equally distance from apex of both wings 11

11. Head dark on the upper part, at least eyes are red (at the mature ones) 12
 Head with bright parts on the upper side, no red color at all 13

12. Abdomen red with black marks *Pyrrhosoma nymphula*
 Abdomen colored black or dark bronze and blue *Erythromma najas*

13. Upper side of the second segment of the abdomen totally black,
the spots at the upper side of the head circular *Ischnura* 14
- Upper side of the second segment of abdomen blue, green or brown
with black marks, the spots at the upper side of the head triangular,
sometimes connected with a thin bright line 15
14. Eighth segment of abdomen colored at the upper side *Ischnura elegans*
Eighth segment of abdomen at least half black *Ischnura pumilio*
15. Thorax with a black line in the middle (fig. 7), shoulder line thin *Coenagrion* 16
- Thorax without a black line in the middle (fig. 8),
shoulder line often broad *Enallagma cyathigerum*
16. Lower anal appendages very large (fig. 9),
damselfly mostly colored green *Coenagrion armatum*
- Lower anal appendages small, damselfly mostly colored blue 17

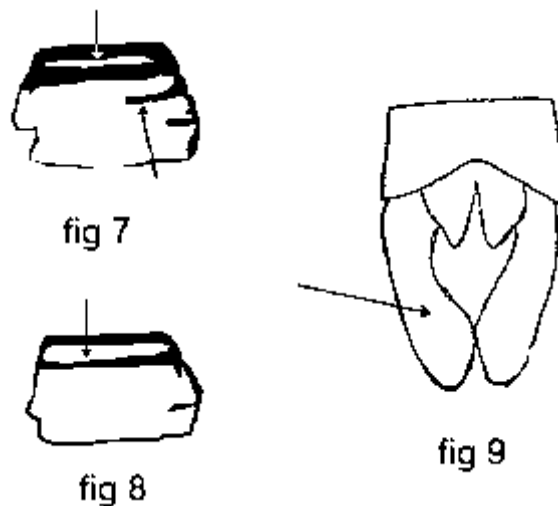


fig.7. *Coenagrion* sp., male, thorax from side
fig.8. *Enallagma cyathigerum*, male, from side
fig.9. *Coenagrion armatum*, male, anal appendages

17. Third segment of abdomen with a black line at lower side (fig. 14),
damselfly tiny *Coenagrion johanssoni*
- Third segment of abdomen with a black line at lower side 18

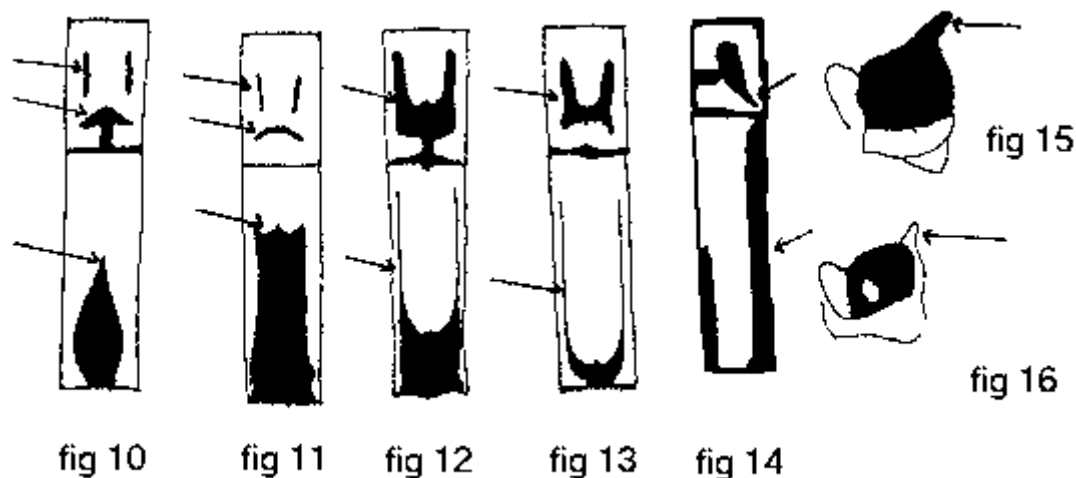


fig.10. *Coenagrion hastulatum*, male, second and third segment of abdomen
 fig.11. *Coenagrion lunulatum*, male, second and third segment of abdomen
 fig.12. *Coenagrion pulchellum*, male, second and third segment of abdomen
 fig.13. *Coenagrion puella*, male, second and third segment of abdomen
 fig.14. *Coenagrion johanssoni*, male, second and third segment of abdomen (side view)
 fig.15. *Coenagrion pulchellum*, male, prothorax (side view)
 fig.16. *Coenagrion puella*, male, prothorax (side view)

- | | | |
|-----|---|------------------------------|
| 18. | Mark at third segment of abdomen tapering or blunted (fig. 10 and 11) | 19 |
| | Mark at third segment of abdomen U-shaped(fig.12 and 13) | 20 |
| 19. | Mark at third segment of abdomen tapering (fig. 10)
check even mark at second segment | <i>Coenagrion hastulatum</i> |
| | Mark at third segment of abdomen are blunted (fig. 11),
check even mark at second segment | <i>Coenagrion lunulatum</i> |
| 20. | Tubercle at prothorax distinctive (fig 15),
even check mark at second segment of abdomen (fig. 12) | <i>Coenagrion pulchellum</i> |
| | Tubercle at prothorax is distinctive(fig 16),
even check mark at second segment of abdomen (fig. 13) | <i>Coenagrion puella</i> |
| 21. | Damselfly with metallic glare | 22 |
| | Damselfly colors matt (red, blue, white, green, black or dark bronze) | 28 |
| 22. | Wings colored, wing mark white | <i>Calopteryx</i> 23 |
| | Wings clear, wing mark black (at adult species) | 24 |

- | | | |
|-----|---|--|
| 23. | Wings brown
Wings light green | <i>Calopteryx virgo</i>
<i>Calopteryx splendens</i> |
| 24. | Damselfly very tiny, wing mark almost as wide as long
Damselfly big, wing mark at least double as long as wide | <i>Nehalennia speciosa</i>
Lestes 25 |
| 25. | Back side of the head dark
Back side of head yellow | 26
27 |
| 26. | Prothorax with only dark spot at the back (fig. 17) | Lestes sponsa |



fig 17



fig 18

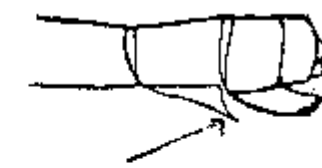


fig 19



fig 20

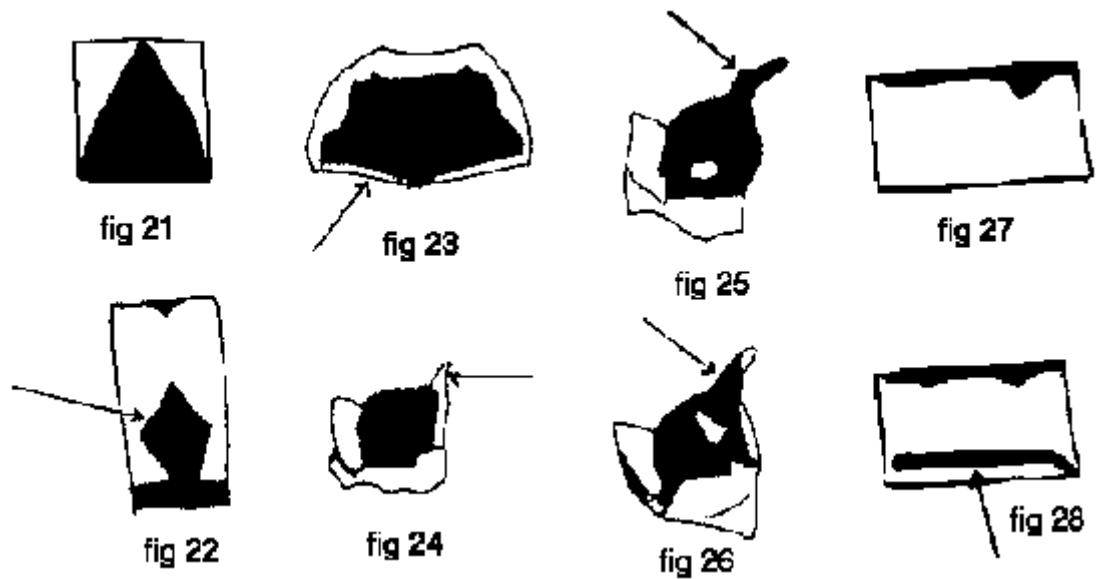
Prothorax with dark spot at the back and dark stripe at the side (fig. 18)

Lestes dryas

- fig.17. *Lestes sponsa*, female, prothorax (side view)
 fig.18. *Lestes dryas*, female, prothorax (side view)
 fig.19. *Enallagma cyathigerum*, female, segment 7-10 of abdomen
 fig.20. *Ischnura elegans*, female, segment 7-10 of abdomen

- | | | |
|-----|---|--|
| 27. | Wing mark one-colored, legs black with yellow stripe
Wing mark two-colored dark/yellow, legs yellowish brown | <i>Lestes virens</i>
<i>Lestes barbarus</i> |
| 28. | Tibias broad and flat, color of damselfly greenish yellow, white or rust
Tibias not broad and flat, color of damselfly not white | <i>Platycnemis pennipes</i>
29 |
| 29. | Wing mark nearer apex of fore-wing than hind wing
Wing marks at equally distance from apex of both wings | <i>Sympecma fusca</i>
30 |
| 30. | Head dark on the upper part, at least the eyes are reddish (at the mature ones)
Head with light parts on upper side, no red color at all | 31
32 |

31.	Abdomen red with black marks Abdomen colored black and yellowish	<i>Pyrrhosoma nymphula</i> <i>Erythromma najas</i>
32.	Lower part of eight segment of abdomen prickle-like pointing backwards (fig. 19 and 20)	33
	Lower part of eight segment of abdomen not prickle-like	35
33.	Eight segment of abdomen with a pointed black mark (fig. 21), wing mark one-colored	<i>Enallagma cyathigerum</i>
	Eight segment of abdomen without a pointed black mark, wing mark two-colored	<i>Ischnura</i> 34
34.	Eight segment of abdomen black at the upper side Eight segment of abdomen colored at the upper side	<i>Ischnura pumilio</i> <i>Ischnura elegans</i>
35.	Marks at second segment of abdomen looks like fig. 22	<i>Coenagrion armatum</i>
	Marks at second segment of the abdomen mostly reaches the edge of the fist segment	35
36.	Upper part of prothorax back edge straight (fig. 23) Upper part of prothorax back edge is not straight	<i>Coenagrion hastulatum</i> 36
37.	Tubercle at prothorax indistinctive(fig. 24)	37
	Tubercle at prothorax large and distinctive (fig. 25 and 26)	38
38.	Second segment of abdomen with a black line along lower side (fig. 28), tiny species	<i>Coenagrion johanssoni</i>
	Second segment of abdomen without a black line along lower side (fig. 27)	<i>Coenagrion puella</i>
39.	Most upper tubercle at prothorax with a "corner" (fig 25), the whole upper part of the abdomen is dark, except for the eight segment	<i>Coenagrion lunulatum</i>
	Most upper tubercle at prothorax without a "corner" (fig 26), the upper part of the abdomen mostly with blue marks	<i>Coenagrion pulchellum</i>



- fig.21. *Enallagma cyathigerum*, female, eight segment of abdomen (top view)
 fig.22. *Coenagrion armatum*, female, second segment of abdomen
 fig.23. *Coenagrion hastulatum*, female, prothorax (rear view)
 fig.24. *Coenagrion puella*, female, prothorax (side view)
 fig.25. *Coenagrion lunulatum*, female, prothorax (side view)
 fig.26. *Coenagrion pulchellum*, female, prothorax (side view)
 fig.27. *Coenagrion puella*, female, second segment of abdomen (side view)
 fig.28. *Coenagrion johanssoni*, female, second segment of abdomen (side view)

© 1997 by Tobias Ivarsson and Martin Peterson.

Latest updated December 3 1997 by Martin Peterson (martin.peterson@mbox301.swipnet.se)